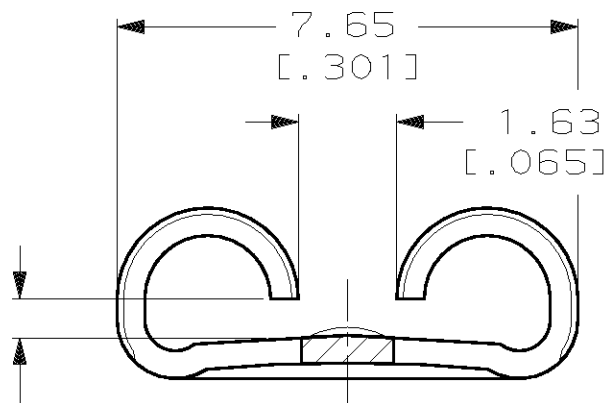
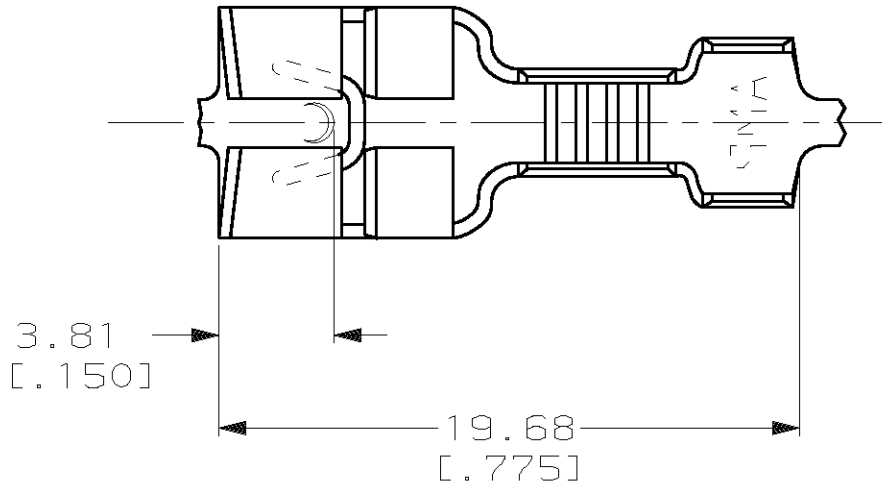


THIS DRAWING IS UNPUBLISHED. RELEASED FOR PUBLICATION, 19  
 © COPYRIGHT 19 BY AMP INCORPORATED. ALL INTERNATIONAL RIGHTS RESERVED.

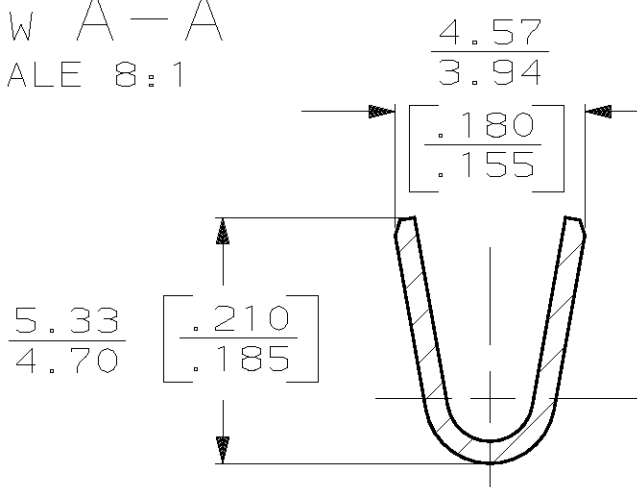
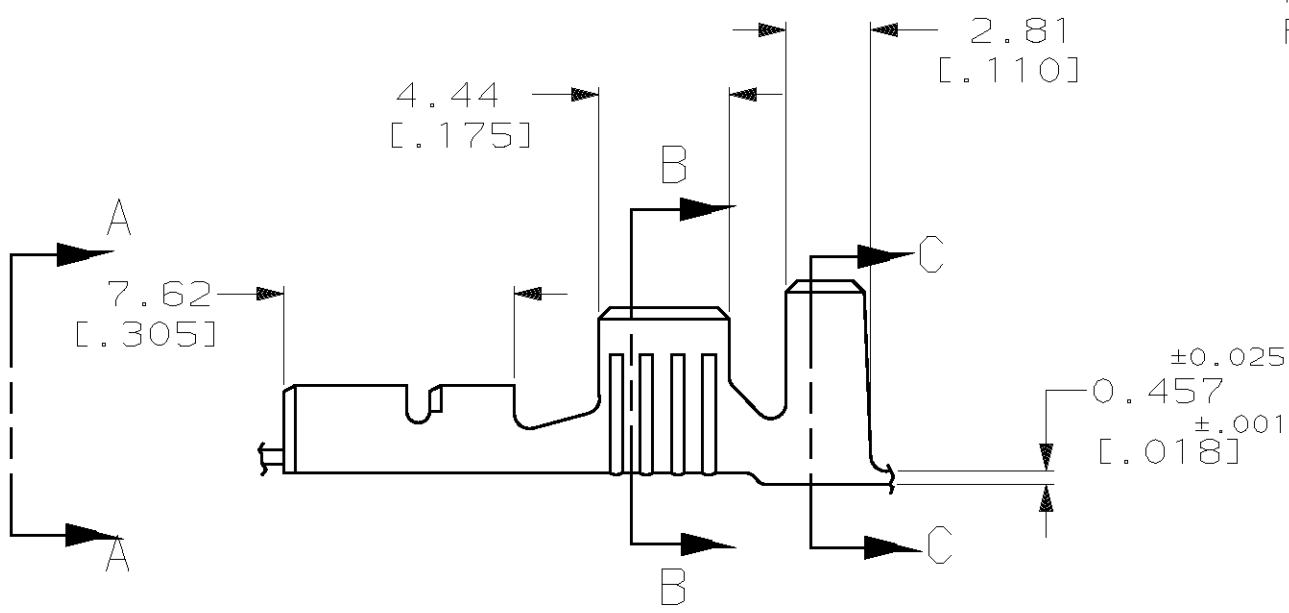
LOC	DIST	P	F	REVISIONS				
AF	50			ZONE	LTR	DESCRIPTION	DATE	APPD
					C	ADDED -2 PER 0L10-0166-97	4/22/97	JR/PD



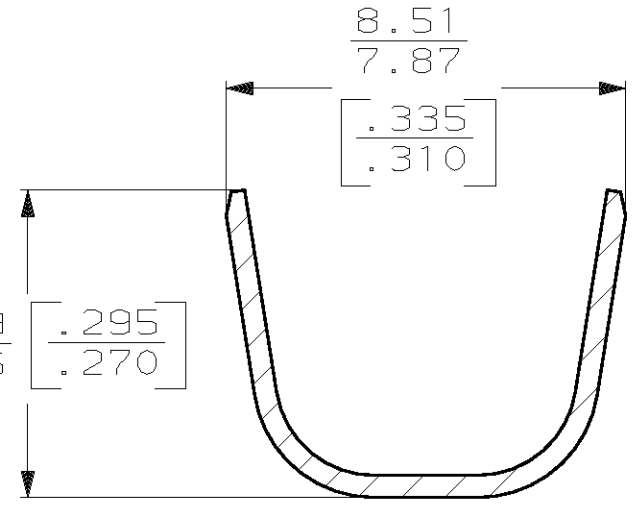
1- CONTINUOUS STRIP ON REELS.  
 2- MATING TAB THK TO BE 0.813±0.025 [.032±.001]

FITS 6.35 [.250] SERIES FASTON TAB

VIEW A-A  
 SCALE 8:1



SECTION B-B  
 SCALE 6:1



SECTION C-C  
 SCALE 6:1

5.72-6.95 OR (2) 3.56 MAX [.225-.275 OR (2) .140 MAX]		2-5mm <sup>2</sup> OR (2) 5mm <sup>2</sup> [14-10 OR 2#14]		-		63539-2	
INSULATION RANGE		WIRE SIZE		FINISH		PART NO	
DO NOT SCALE PRINT. UNLESS SPECIFIED DIMENSIONS IN mm [INCHES] TOLERANCES ON: 2 PLC DEC ± - 3 PLC DEC ± 0.25 [.010] ANGLES ± -		DR 7/31/89 JR RUTH CHK 7/31/89 MS FEHER APPD 7/31/89 C MEYERS APPD 7/31/89 R KUZO		AMP INCORPORATED Harrisburg, Pa. 17105		63539-1	
MATERIAL		PRODUCT SPEC		NAME		RECEPTACLE, FASTON, .250 SERIES	
TEMPER 4M BRASS		-		SIZE		CAGE CODE	
FINISH		APPLICATION SPEC		B		00779	
SEE TABLE		-		DRAWING NO		63539	
WEIGHT -		-		SCALE		4:1	
				SHEET		1 OF 1	

F	7.87 [.310]	5.59 [.220]	F	3.56 [.140]	1.930 [.076]	2.0mm <sup>2</sup> [14]
					2.235 [.088]	3.0mm <sup>2</sup> [12]
					2.692 [.106]	5.0mm <sup>2</sup> [10]
TYPE	WIDTH	STRIP LENGTH ±0.38 [±.015]	TYPE	WIDTH	±.051 [±.002]	WIRE
INSUL BARREL CRIMP			WIRE BARREL CRIMP			